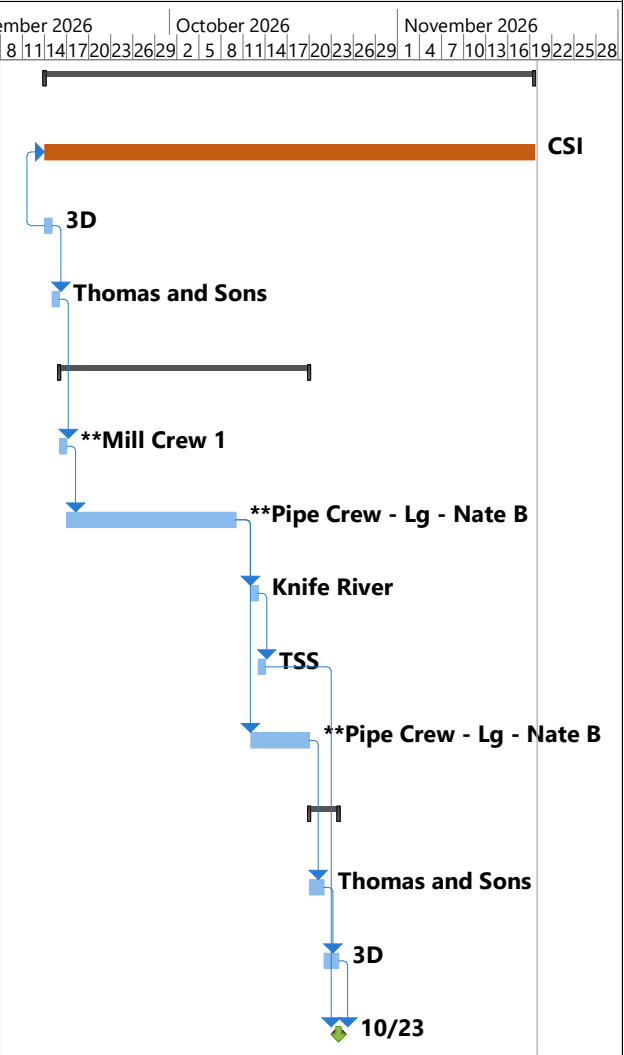


ID	WBS	PM	State	Project #	Plant #	Task Name	Work	Duration	Start	September 2026							October 2026							November 2026							
										27	30	2	5	8	11	14	17	20	23	26	29	2	5	8	11	14	17	20	23	26	29
1	1	JM	ND	26038		26038 Preconstruction	47 days	48.69 days	Mon 9/14/26																						
2	1.1	JM	ND	26038		45 Cal Days	45 days	45 days	Mon 9/14/26																						
3	1.2	JM	ND	26038		26038 Traffic Control setup	1 day	1 day	Mon 9/14/26																						
4	1.3	JM	ND	26038		26038 Erosion Control setup	1 day	1 day	Tue 9/15/26																						
5	2	JM	ND	26038		26038 CSI Construction	26 days	24 days	Wed 9/16/26																						
6	2.1	JM	ND	26038		26038 Milling of site 1	1 day	1 day	Wed 9/16/26																						
7	2.2	JM	ND	26038		26038 Site 1 - Triple 16x16	17 days	17 days	Thu 9/17/26																						
8	2.3	JM	ND	26038		26038 Paving	1 day	1 day	Mon 10/12/26																						
9	2.4	JM	ND	26038		26038 Site 1 Paint	1 day	1 day	Tue 10/13/26																						
10	2.5	JM	ND	26038		26038 Site 2 - Removal/Pipe	6 days	6 days	Mon 10/12/26																						
11	3	JM	ND	26038		26038 Close out	4 days	4 days	Tue 10/20/26																						
12	3.1	JM	ND	26038		26038 Seeding	2 days	2 days	Tue 10/20/26																						
13	3.2	JM	ND	26038		26038 Traffic Control takedown	2 days	2 days	Thu 10/22/26																						
14	3.3	JM	ND	26038		26038 Completion date for both Sites	0 days	0 days	Fri 10/23/26																						



This schedule is for reference purposes only. While we strive to maintain accuracy, please be aware that project timelines, order of operations, and durations are subject to change. Contact the project manager for the most up-to-date schedule.